



CARLEXDESIGN®

CARLEX DESIGN BUS FLOOR SYSTEM

01. **CARLEX DESIGN X1 PASSENGER SEAT**

- / stylish shape for premium conversion interiors
- / top quality leather upholstery
- / two armrests
- / adjustable backrest
- / additional headrest cushion
- / revolving base allowing for a quick change of position forwards or backwards
- / convenient slide and lock mechanism of the seat in the rail
- / integrated seat belts
- / homologation/type approval tests as regards their compliance with UN/ECE Regulations
- / customising options (logo, colour, materials) in line with the terms and conditions of contract
- / bracket offset in line with Carlex Design BFS

Planned availability: 1 June 2021





additional headrest cushion

integrated seat belts

armrests adjustable up and down

revolving base

adjustable backrest angle

possibility of sliding along the entire rail

seat lock points distributed every 10 cm

convenient slide and lock mechanism
of the seat in the rail

logo customising options
(contract orders)



02. CARLEX DESIGN COMPOSITE FLOOR

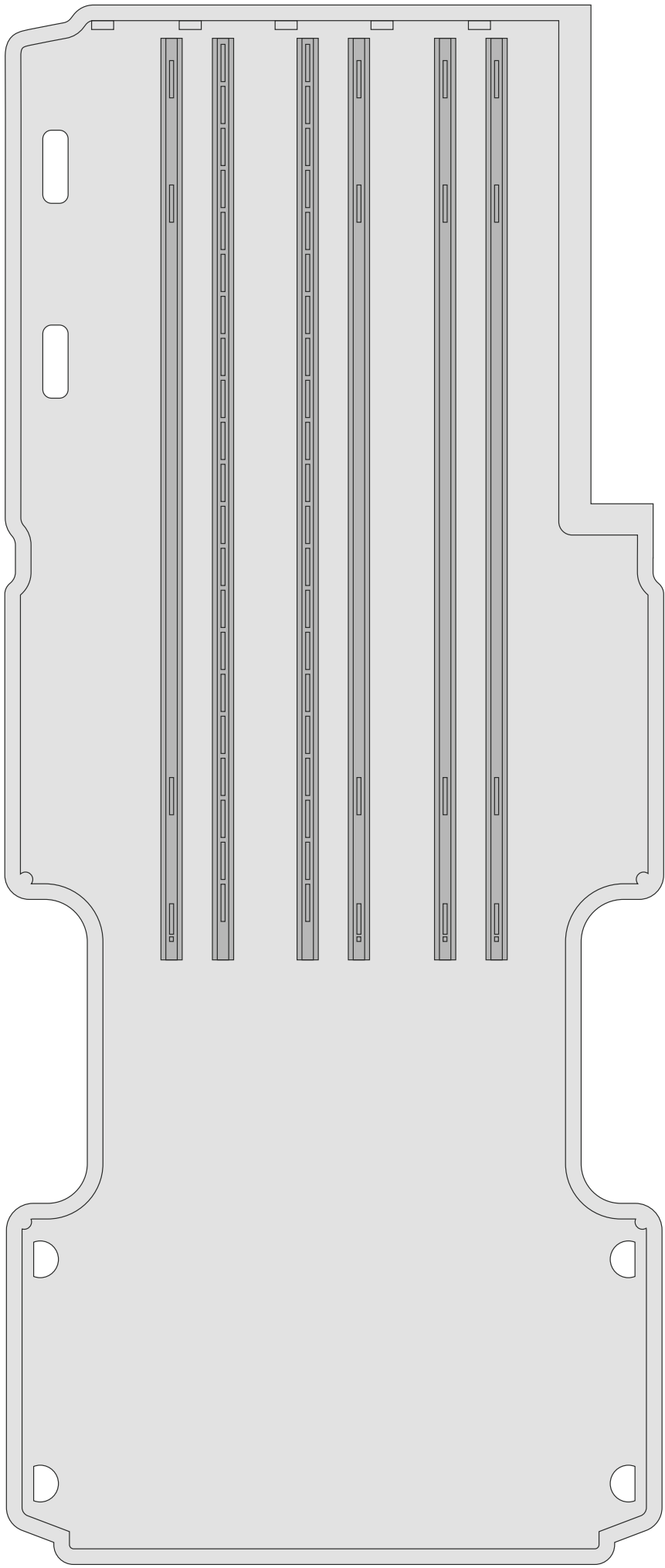


02. CARLEX DESIGN COMPOSITE FLOOR

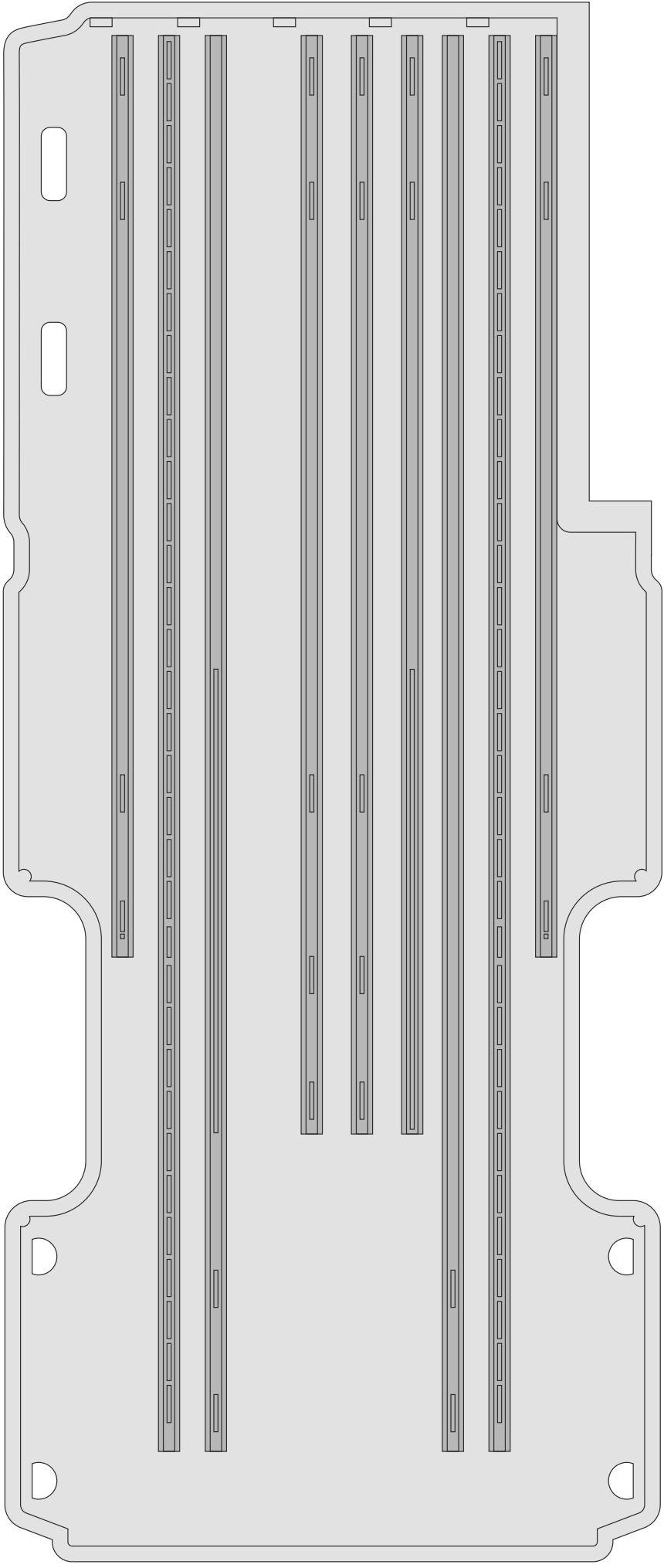
- / top quality multilayer composite floor
- / precise contours adjusted to the specific car model and equipment
- / supplied in one piece with rails and carpet (easier and faster assembly than in the case of folding floors)
- / assembly with strong and durable adhesive (no extra fittings under the floor)
- / foam core damping vibrations and sound, as well as providing thermal insulation
- / carpet or vinyl vacuum-attached padding (smooth surface, no bulges, no extra work)
- / rail offset in line with Carlex Design BFS, which allows for full interior modularity as regards the number and distribution of seats, tables, and bench
- / low floor weight
- / homologation/type-approval tests of Carlex Design BFS (floor + seats) as regards their compliance with UN/ECE Regulations for selected car models: Mercedes Sprinter, VW Crafter, Ford Transit, MAN TGE
- / possibility of making floors and carrying out tests for other vehicles: VW T6, Mercedes Vito, Ford Transit Custom, etc. (contract orders)

The launching of a new floor concept (in accordance with the guidelines of the business partner) takes approx. 3-8 weeks. Date and costs of the homologation/type-approval tests to be defined by the research unit.

Planned availability: 1 June 2021



BASIC



EXTENDED



outer rails for 3 seats

inner rails for 2 seats + table



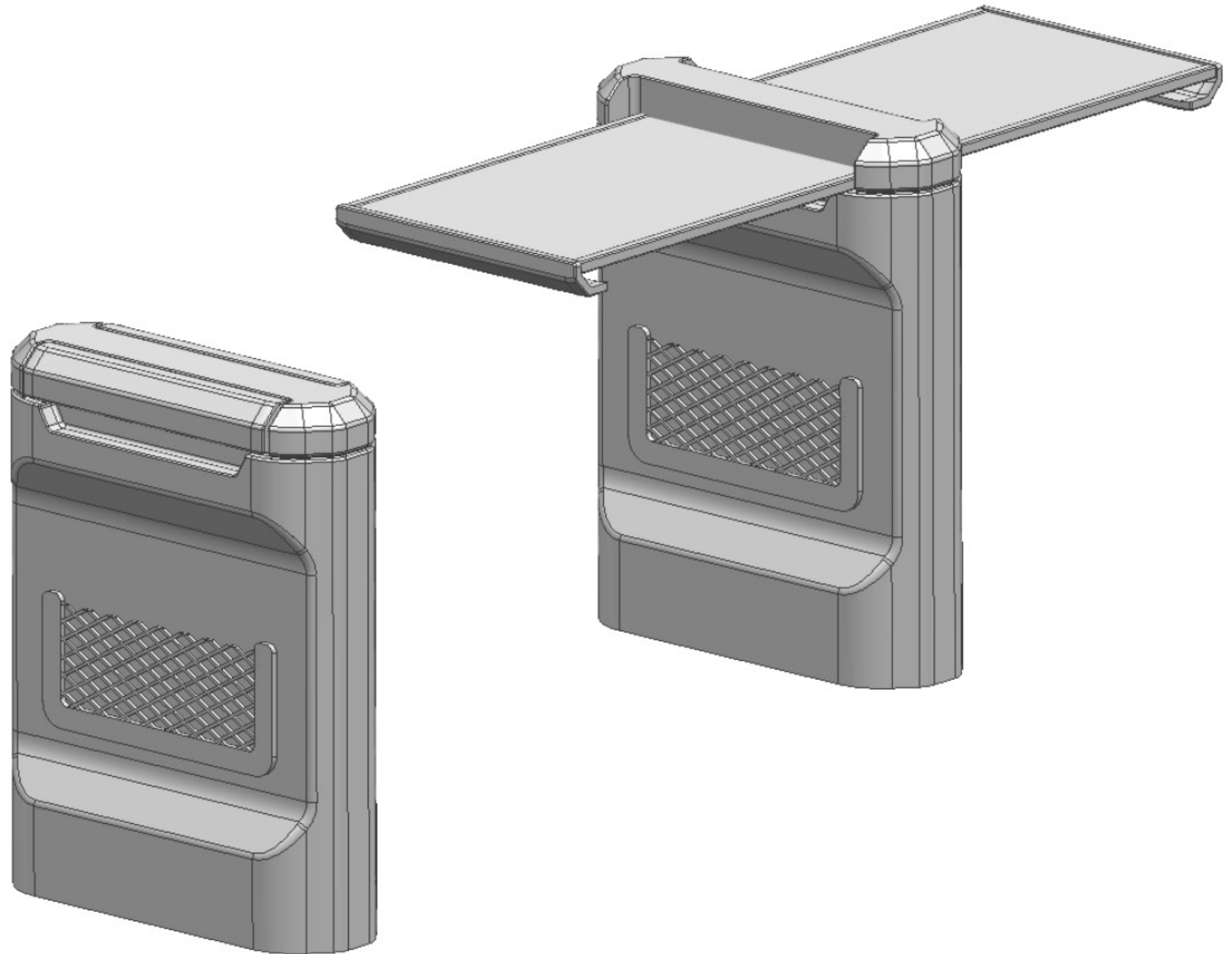
seat sockets at the front and at the end of the rail

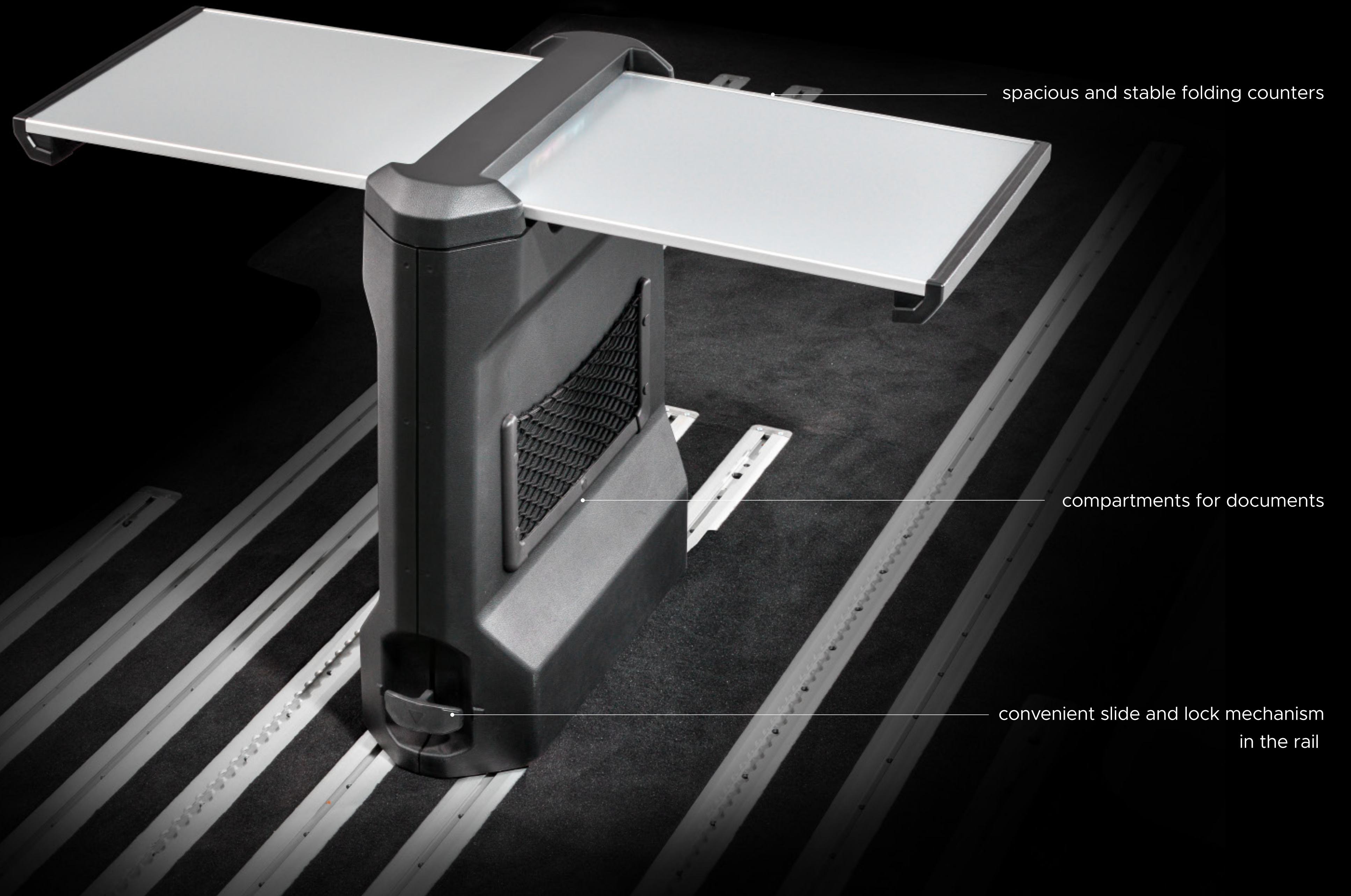
rails allowing for the fitting of a folding bench

vacuum-attached padding

03. CARLEX DESIGN BFS FOLDING TABLE

- / independently folding counters to the left and to the right
- / system of quiet folding of the counters to inner compartments
- / stylishly looking both with folded and unfolded counters
- / possibility of sliding along the entire rail
- / possibility of fitting the table instead of the seat (bracket offset compatible with Carlex Design BFS)





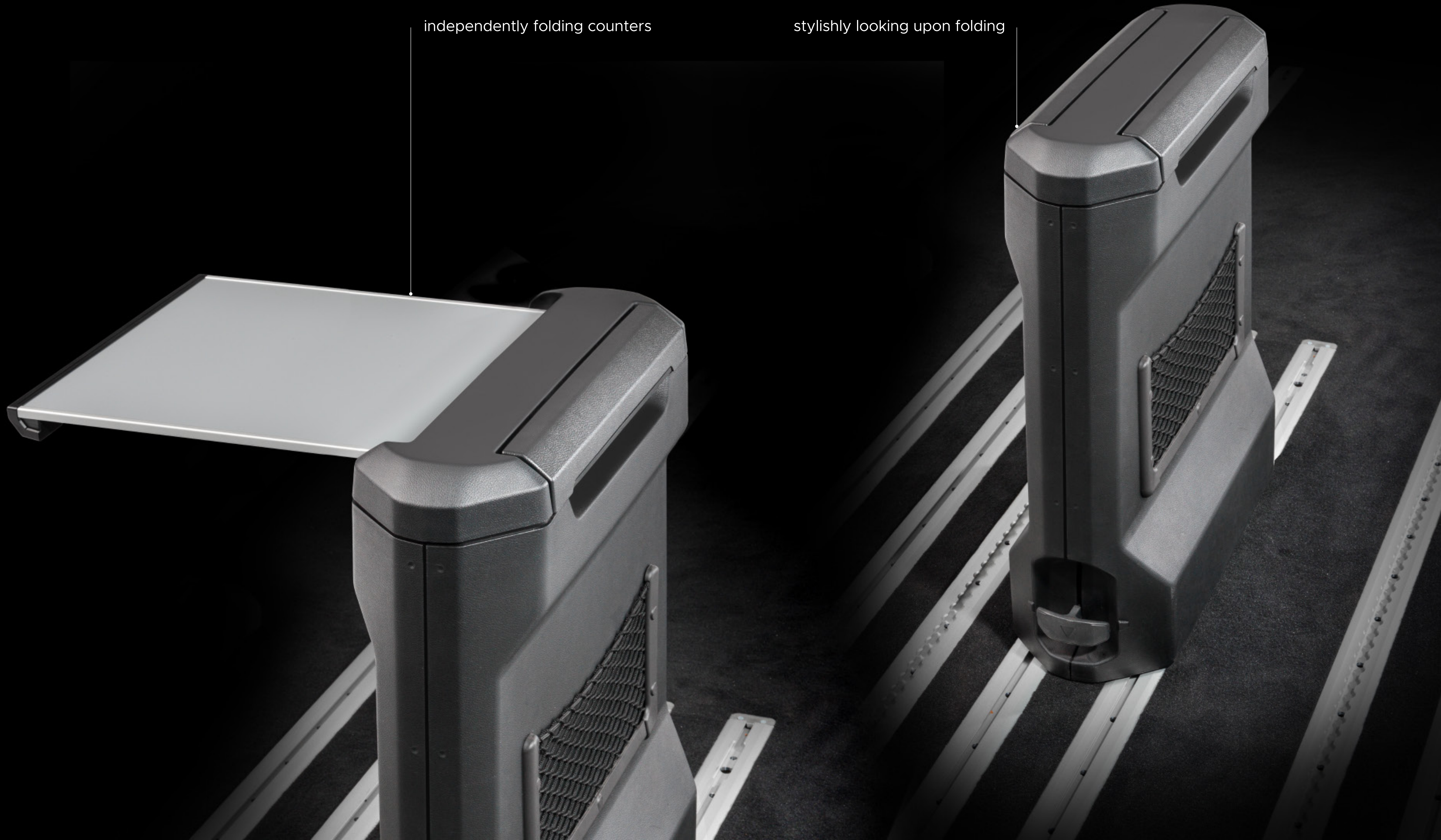
spacious and stable folding counters

compartments for documents

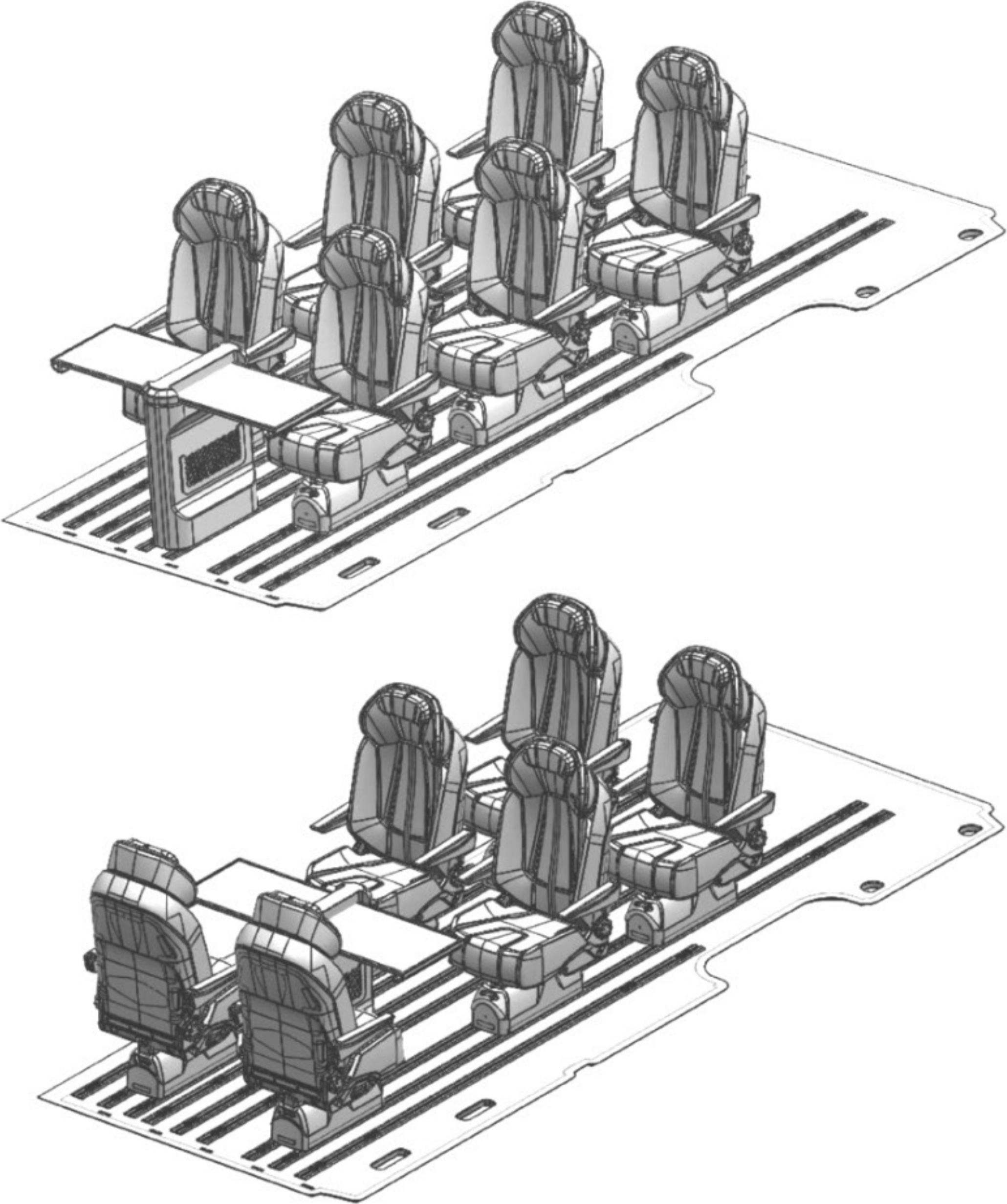
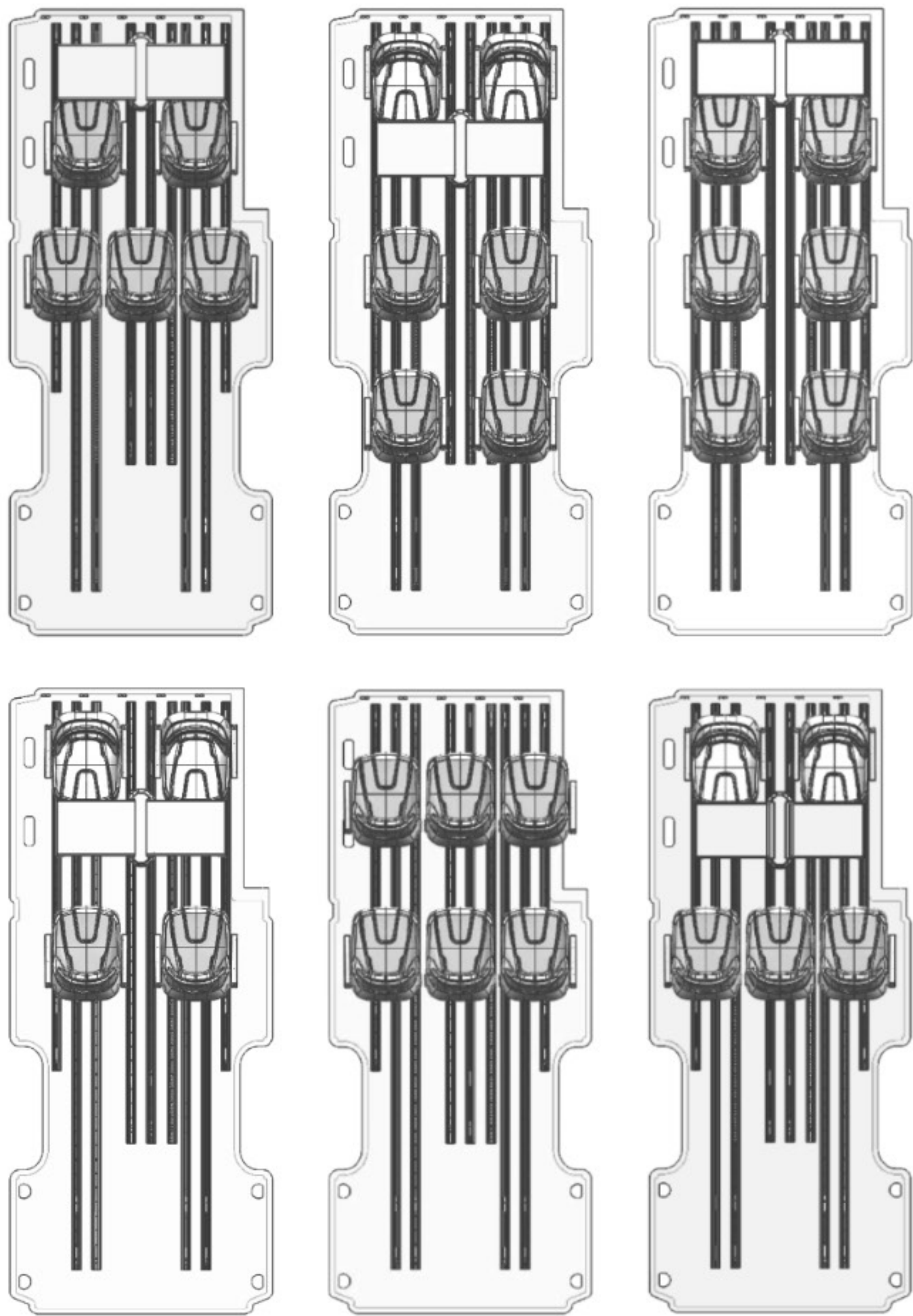
convenient slide and lock mechanism
in the rail

independently folding counters

stylishly looking upon folding



FREE AND VERSATILE SPACE TO PERFECTLY MATCH USERS' NEEDS



Possible layouts for the Mercedes Sprinter 907 Long version



SAMPLE INTERIOR
CUSTOM X BLACK SERIES









Carlex Design Limited Sp. z o.o.

A: ul. Świerkowa 41
43-502 Czechowice-Dziedzice
Poland

P: +48 32 210 10 22

M: sales@carlexdesign.com

VAT PL8961560922

ING EUR

PL17 1050 1070 1000 0090 3122 8456

BIC/SWIFT: INGBPLPW

CARLEXDESIGN.COM

